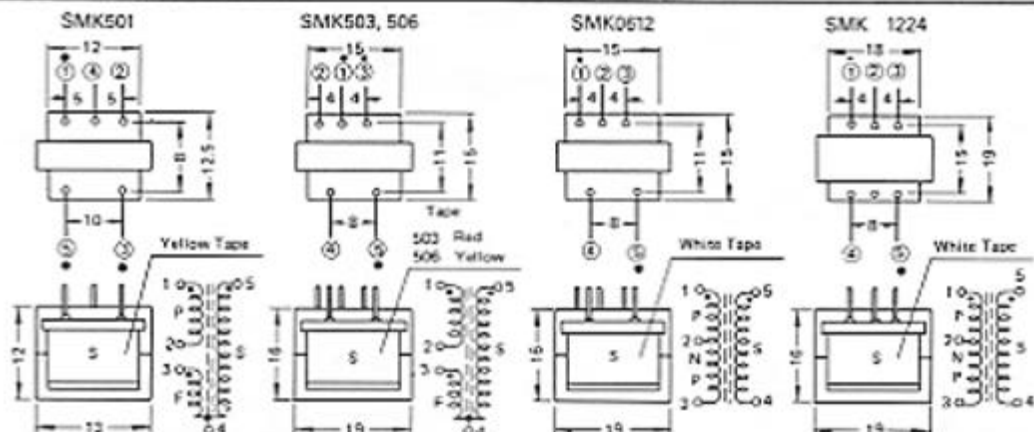
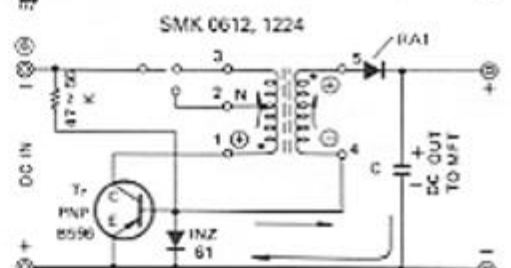
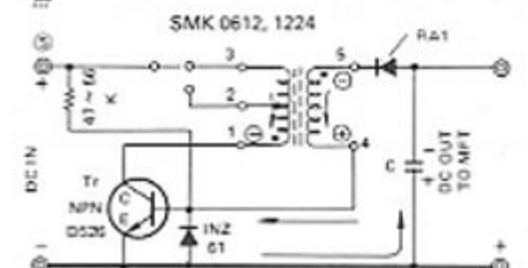
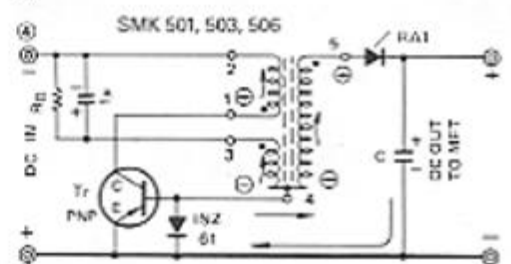
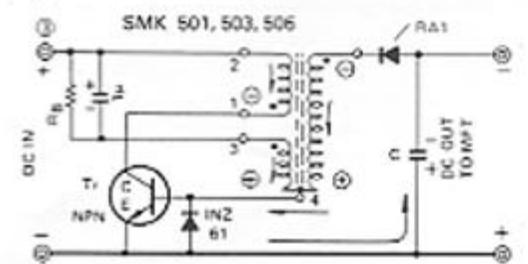
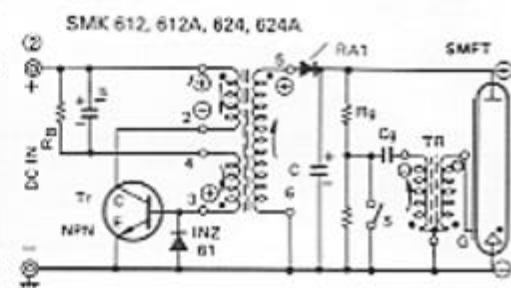
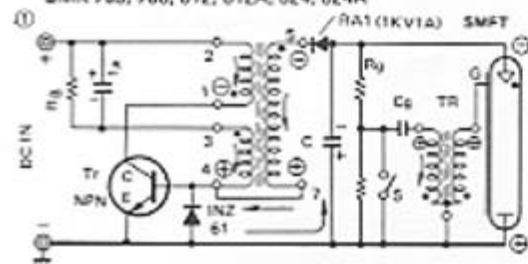


# OSCILLATION TRANSFORMERS Continued

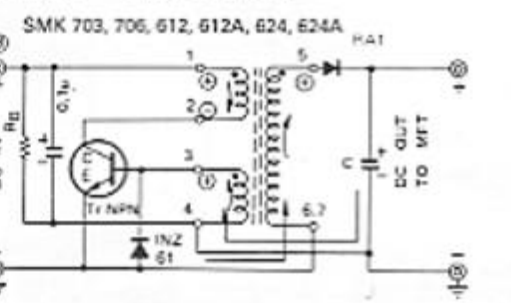
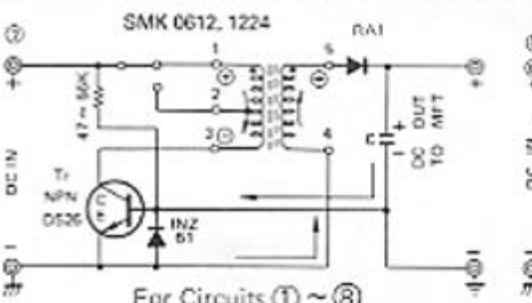


## TYPICAL OSCILLATION CIRCUITS

SMK 703, 706, 612, 612A, 624, 624A



## OTHER REFERENCE CIRCUITS (TR NPN - ⊕ DC OUT)



For Circuits (1) ~ (3)

DC IN	1.5V	3V	6V	12.24V
Tr, R <sub>B</sub>				
Silicon NPN	C2500(0.9W) × 2	C2500 × 2, C2270(10W)	C2270, D526(30W), D553(40W)	D526, D553, D717(80W)
Silicon PNP	B893(0.8W) × 2	B893 × 2, A1120(10W)	A1120, B596(30W), B553(40W)	B596, B553
R <sub>B</sub>	KΩ			
	0.25 - 0.33	0.5	1	1 - 2